



Color Fractal Generator

User's Manual

version 2.1

for Color Fractal Generator 2.1

by John A. Schlack

April 1994

Table of Contents

List of Illustrations	iv
Requirements	1
New in Version 2.1	1
CFG Contents	2
Very Brief Background	4
Detailed Fractal Description	5
Mandelbrot Set	5
Julia Set	6
Dragon Curves	6
Random Walk Fractals	7
Generating Fractals	8
Basic Concepts	8
Fractal Parameters	10
Selection	14
Zoom	15
Applying Color	17
Saving Data	25
Preferences	26
Display Progress Scale	27
Display Fractal Line by Line	28
Draw Fractal Immediately	28
Display Random Walk	29
Save Generated Fractal	29
Save Palette	29
Depth	30
Precision	30
Fractal Size and Memory	30
Help System	32

Main Menu	35
Apple	35
File	36
Edit	38
Fractal	40
Size	41
Special	42
Standard Palettes	44
Function	45
Parameters	46
Background Speed	46
Windows	47
Scripts	48
Pop-Up Menu	49
Open Palette	49
Depth	50
Scripting	51
Shared Menu	53
Speed Comparisons	53
Machines Tested and Bugs	54
PowerMacs	55
Registration	56
Feedback	57

List of Illustrations

Figure 1: New Parameters Window	8
Figure 2: Random Walk Parameters Dialog Box	11
Figure 3: General Parameters Dialog Box	13
Figure 4: Fractal Scaling Dialog	16
Figure 5: Maximum Colors Dialog	18
Figure 6: Palette Editor	21
Figure 7: Load Palette Dialog	23
Figure 8: Resource Palette List Dialog	24
Figure 9: Preferences Dialog	27
Figure 10: Progress Scale	28
Figure 11: Custom Fractal Size Dialog Box	31
Figure 12: CFG Help Manager Window	33
Figure 13: Quick Script Dialog	52
Table 1: FPU/Color Depth Speed Comparison	54
Table 2: Generation Speed Comparison	54

Requirements

Color Fractal Generator (CFG) is only intended for use on a Macintosh color computer with at least a 4 bit (16 color) display and System 6.05 or later (System 7.x preferred). System 6.0x must run with MultiFinder. This program supports 4, 8, 16, and 32 bit color systems, but the monitor must be at least 12" in size (minimum of 512 pixels by 384 pixels). CFG does not require a math coprocessor (even though it is doing some heavy number crunching), but it will take advantage of one, if present. The program is 32-bit clean and can generate fractals in the background, permitting the user to engage in other frivolous activities. Power Macs must currently run this program in emulation mode (see the *PowerMacs* section below).

This program has been designed to provide extensive scripting support. CFG has the appropriate code to handle both AppleScript and UserLand Frontier. Using the scripting capabilities is definitely not required to generate great fractals using CFG, but it does provide the user with the ability to extend the power of this program. One can write scripts to provide simple utilities that make CFG easier to use (such as the Stack Windows sample script), automate the exploration of the fractal universe, or even create fractal movies. If one does not possess an the AppleScript extensions or the commercial version of Frontier, Frontier Runtime may be used. This is the Shareware version of Frontier. It has some limitations, but it does provide a lot of the capabilities of the full version, but at a greatly reduced cost (since it's Shareware, you can also try before you buy). The runtime version is available on bulletin boards or Shareware CD-ROMs. If you have access to the full version, even better.

New in Version 2.1

The color model has been corrected for 4-bit and 8-bit color systems. These settings (especially the 8-bit) will produce brilliantly colored fractals whose color can be

reliably reproduced. Scripting support has been added including an extensive set of verbs, shared menus, and a quick script utility. In addition to native CFG palettes, this program can load palettes from resources of type 'clut' and 'pltt'. One may select the floating point display precision, anywhere from 3 to 18 digits. The *Window Size* item from the *Size* menu has been removed. Having the option of resizing the fractal image data whenever the window was resized or zoomed was just too volatile. However, three QuickTime sizes have been added to this menu.

Other significant features include: support for 4, 16, and 32-bit color, full background processing, building multiple fractals simultaneously, palettes, saving a fractal during generation and then restarting where left off (registered users), both a help dialog providing extensive online support and balloon help for quick reminders, System 7.0 features, and support for computers with and without math coprocessors.

CFG Contents

Unregistered Version

CFG 2.1	unregistered version
Registration Form	form for registering CFG
miniManual	short program overview, registration information, and information on obtaining the full manuals
Settings <i>f</i>	sample fractal settings
Palettes <i>f</i>	C source code for creating your own palettes (THINK C 6.0 format) and some sample palettes
CFG Manual	full CFG manual
CFG Scripting Guide	technical documentation of scripting CFG

CFG & Frontier *f*

UserLand Frontier install files and DocServer documentation for scripting

Standard Version

Everything from "Unregistered Version" (but CFG is registered) plus the *movieDemo* folder:

movieDemo

sample Frontier script (and two support scripts) that creates a PICS fractal movie

cfgMovieDemo.ucmd

"plug-in" for Frontier to add functionality required by movieDemo; includes C source code for the UCMD

μCinema Convert

simple PICS to QuickTime conversion application and C source code

Master Version

Everything from "Standard Version" plus:

Source *f*

full source code to CFG in THINK C 6.0 format (includes portions of Frontier SDK 3.0 which are used to build CFG)

Very Brief Background

The fractals in this program are the result of pseudo code taken from *Scientific American*. It creates fractals using either Mandelbrot, Julia, Dragon, or Random Walk algorithms.

The Mandelbrot and Julia fractals are the fractals that most people have seen previously. The Dragon fractal family is very similar to both Mandelbrot and Julia families. In these fractals, the screen is a complex coordinate grid. There is one constant complex number and one that varies. Each pixel is assigned a color by an algorithm that determines the amount of iterations needed for the algorithm to reach an escape ("freedom") value. A limit is placed on the iterations ("accuracy") which stops the calculation if it seems that the algorithm will never reach the freedom value. The lower these freedom and accuracy values are set, the faster the fractals can be generated.

Colors are determined by the number of iterations required to reach the freedom value. If a pixel does not reach freedom, it is colored black. If a screen location is already beyond the freedom value, the pixel is colored white.

The Random Walk algorithm places a pixel in the center of the screen. It then places one at the edge of an invisible circle and the computer moves the pixel in random directions. It stops when the pixel touches a colored pixel or goes outside the circle. This process continues until some number of colored pixels are displayed on the screen. An option exists to display the point as it wanders aimlessly. Note: This algorithm is quite time consuming. For maximum speed, do not display the walk, just display the end result. The walk is entertaining, but only for a few minutes (not a few hours or days).

The circle size for Random Walk constantly changes in an attempt to limit the time required for fractal generation. This circle is not too close to the central colored pixels, but not so far that the generation time becomes ridiculous.

Detailed Fractal Description

Below is a more in depth description of the fractals and their algorithms. The general algorithm, coloring process, and equations related to the fractal are shown.

Mandelbrot Set

The Mandelbrot set is the fractal type which is most well known. The fractal is a color representation of an equation composed of complex numbers. The Mandelbrot equation is:

$$z_{i+1} = z_i^2 + k$$

where z is a complex variable and k is a complex constant. The equation is iterative. One determines the value of the next iteration (variable with $i+1$ subscript) based on the current value (variable with i subscript) of the variable.

Different screen pixels represent different complex variables. In fact, CFG uses the screen as a complex plane. The horizontal axis of this plane represents the real component of the variable, while the vertical axis contains the imaginary part. Moving from left to right increases the real component, while moving from bottom to top increases the imaginary component of the complex number. The value of each pixel is obtained by combining the real and imaginary components to produce the initial complex number used in the fractal calculations.

The coloring of a pixel is directly related to the iteration process. It is desirable to find out whether the equation is well behaved and approaches some limiting value or if the value will forever increase. Since time is a consideration, the equation cannot be executed forever. Constraints are placed on the equation. The equation must reach a "freedom" value within a given number of iterations to be considered to be increasing infinitely. If the equation does not reach the freedom value within the number of iterations, the pixel is set to black. If the value of the pixel is beyond the freedom value before any iterations, it is assigned to white.

Otherwise, the color depends upon how quickly the fractal point reached the freedom value.

By modifying the freedom value and number of iterations, the user can change the color of the fractal. CFG implements both of these values as natural numbers (not floating point numbers). These numbers can be modified by selecting *Mandelbrot* from the hierarchical menu *Parameters* which is under the *Fractals* menu. Colors are also altered by changing the scale at which the fractal is viewed as well as the fractal center and the constant number.

Julia Set

The Julia set is related to the Mandelbrot set. In fact, the same equation is used. The difference is that instead of examining the value of the equation by varying the variable (z), z is held constant while k varies. The effect is to look at a single point in the Mandelbrot set and see its value when using different constants. The coloring scheme remains the same.

Please note that the parameters dialog box has a slightly different meaning for the Julia set than for the Mandelbrot fractal. Center Real and Center Imag are the locations in the Mandelbrot set and form the fixed reference point (constant). Const Real and Const Imag form the center of the "constant", which is actually a variable in the Julia set.

Dragon Curves

The Dragon curves are similar to Mandelbrot and Julia sets since the Dragon curves use the complex coordinate plane with a variable and constant (which is held fixed). The equation for these curves is:

$$z_{i-1} = kz_i(1-z_i)$$

Again, z is the complex number and k is the constant. The coloring method is also the same as the Mandelbrot and Julia sets.

Random Walk Fractals

The final fractal type present in Color Fractal Generator is the Random Walk fractal. This fractal is completely different from the previous three types. This fractal type lies on a simple integer plane, with horizontal values increasing left to right and vertical value increasing bottom to top. The plane size is limited to the size of the fractal (set by the 'Size' menu).

A single pixel (colored black) is set in the center of the plane. A new point is placed on an invisible circle whose center is the initial pixel. The computer moves the point in random directions. This process ceases when any of the following occur: the point moves outside this circle, the maximum number of steps have elapsed, or the point touches any colored pixel (initially, only the single black pixel is considered colored). If the point moves outside the circle or the maximum number of steps elapse, the point is discarded and a new one starts this process. If the point remains (it touched another colored pixel), the location of the point is colored according to user defined preferences. This process continues until some number of points is displayed. This number is also user defined.

There are six coloring schemes used by CFG: direction that the point last traveled, direction that the fractal touched, the angle formed by drawing a line from the fractal center to the new pixel, the time that the point was "walking", the distance from the pixel to the fractal center, and the distance between the current point and the last point that CFG placed. As many options as desired may be set, but at least one of these options must be set. The *Generating Fractals* section provides more insight into the meaning of the color options. If more than one

option is used, the resulting color is an average of colors that would have resulted from each of the coloring options individually.

Generating Fractals

There are two methods to initiate a fractal display: create a new fractal or open a saved fractal. To create a new fractal, simply select *New* from the *File* menu. Opening a saved fractal is just as easy: choose *Open* from the *File* menu and select the saved file from the standard open dialog box. These methods are OK for either opening pre-saved fractals or seeing the default fractal, but to get the most out of this program, the user will need (and almost certainly desire) to do more.

Basic Concepts

Several concepts need to be understood before undertaking the fractal creation process. Basic concepts include the *New Parameters* window, image size, and generation speed. The most important of these ideas is the *New Parameters* window (see Figure 1), which contains information about the fractals that will be created.

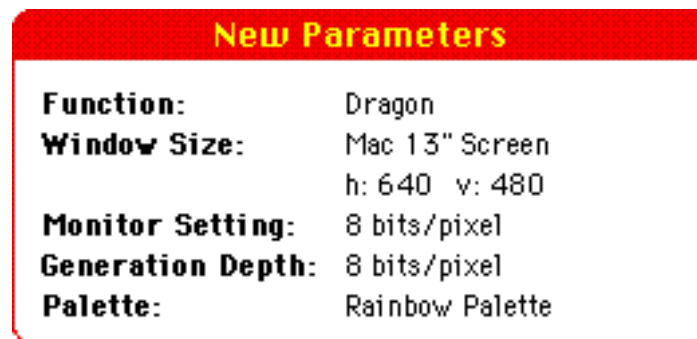


Figure 1: *New Parameters* Window

The *New Parameters* window displays the current function, window size, monitor setting, fractal creation depth, and the palette which will be applied to new fractals. Many of these values can be modified by different menu options. The function is the fractal that will be generated when *New* is selected. This item can be modified by selecting a fractal from the *Function* hierarchical sub-menu of the *Fractal* menu. The window size determines the image size of the fractal. The first line is the name corresponding to the *Size* menu, while second row contains the image's horizontal and vertical size in pixels. The Monitor Setting is the color depth of the monitor with the most colors in your system. Generation Depth is the depth at which the image will be created. This value will be the same as Monitor Setting unless a specific depth is selected from the Preferences dialog box (see the *Preferences* section). Finally, Palette is the name of the palette which will be applied to new fractals.

Changes to items listed in the *New Parameters* window will be displayed when they are made. However, these changes must be made with either the *Help* window or *New Parameters* window as the front window. Changes made with other windows in the front apply to those windows individually and have no effect on the "global" parameters. This is very important. The global parameters are what control the creation of new parameters while changing parameters with a fractal window as the front window changes the window's "local" parameters. This permits modification of a currently open fractal without changing parameters of fractals that will be created. This also works in reverse. One may change the global parameters for new fractals without modifying currently open fractals.

The size of a fractal is completely up to the user. The menu lists several standard image sizes. A custom size may also be selected. Information on each of these sizes is located in the *Menus* section (under the *Size* menu) and in the *Fractal Size and Memory* section.

It is also important to choose the speed at which to generate fractals. First decide whether to generate the fractal in the foreground or background. Foreground processing is the fastest method, but only one fractal may be generated at a time. More importantly, the Macintosh cannot be used for other tasks while processing in this mode. Background processing offers the advantages of being able to perform other duties while creating fractals. One may choose from three background speeds: slow, medium and fast. As expected, slow generates a fractal slowly, providing the most time for other applications, while fast creates a fractal more quickly, but uses more processing power. In most cases, run in medium or fast mode. Only operate in slow mode if you are performing other time consuming tasks that require lots of processing power (or if you have a machine without a math coprocessor).

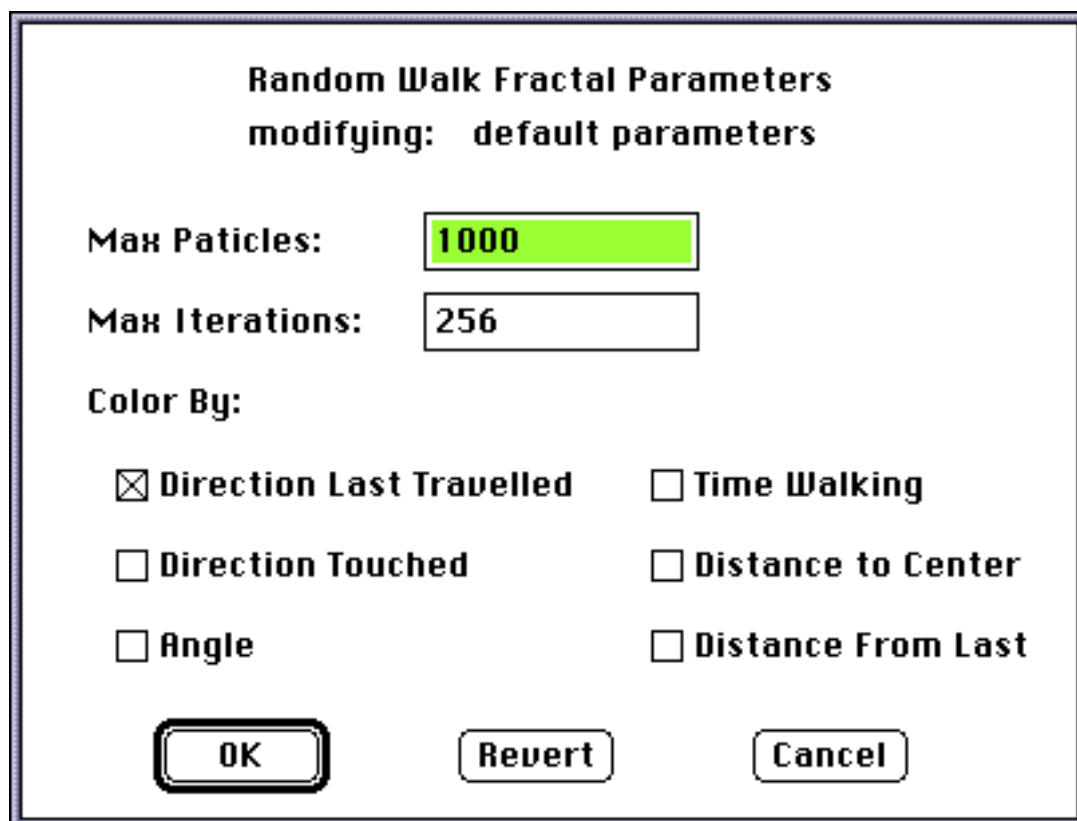
To stop the fractal creation process for foreground generation, press the command (apple) and period keys simultaneously or if the progress scale is displayed (see *Preferences* section), press the cancel button. For the background, press either the command (apple) and period keys simultaneously or select the *Stop* item from the *Fractal* menu. After stopping the generation, one can continue from where the creation process left off by selecting *Continue* from the *Fractal* menu. Selecting *Redraw* from this menu will clear the current fractal image and start generation over again.

While the fractal is generating in the background, many options will not be available. The palette cannot be accessed, a selection cannot be made, parameters cannot be changed, the image size stays fixed, and one may not zoom the image.

Fractal Parameters

Each fractal has certain parameters associated with them which regulate how the fractal is created. Select the fractal window whose parameter you want to

modify or select either the *New Parameters* window or *Help* window to modify the global parameters (for future fractals). Select the fractal that you wish to modify from the *Parameters* sub-menu, which resides in the *Fractal* menu. If a fractal window is the active window, only the parameters that apply to the window's fractal function may be modified. If the fractal was a Random Walk fractal, a dialog box similar to Figure 2 is displayed. For any other type of fractal, the dialog box in Figure 3 is shown.



Figure

2: Random Walk Parameters Dialog Box

The parameters applicable to Random Walk fractals determine the maximum number of particles to display, how long to wait for contact, and the coloring method for each pixel. The Maximum Particles item sets the maximum number of pixels to be colored using the Random Walk algorithm. A 640 x 480

pixel screen has over 300,000 pixels. Coloring all of these by the Random Walk method would take months to generate (if at all possible since the method leaves gaps in the fractal). A good number might be between 1000 and 5000 points. However, be prepared to wait a while. Max Iterations sets the number of steps to make before discarding the point. If the number is too low, the roaming points may never reach other pixels. If it is too high, time might be wasted while the point wanders in a region with few pixels to impact. Generally, it is good to err on the large size. Note: The default setting is 1000 iterations. This might be quite low for large walks.

There are six coloring options for Random Walk fractals: direction that the point last traveled, direction that the fractal touched, the angle formed by drawing a line from the fractal center to the new pixel, the time that the point was "walking", the distance from the pixel to the fractal center, and the distance between the current point and the last point that CFG placed. One may select any combination of these coloring schemes. If more than one method is used, the colors produced by each option are averaged to produce the pixel color.

Direction that the point last traveled permits up to four colors for a pixel: one for left, right, up, and down. Similarly, direction that the fractal touched a pixel provides only four colors.

The angle formed by drawing a line from the fractal center to the new pixel permits many fractal colors and will produce a radial color pattern since the color depends upon the angle. This coloring method uses floating point numbers to generate the angle and can produce as many colors as can be displayed.

The time that the point was "walking" produces a color based upon the number of steps required to collide with the point. This method produces at most Max Iterations colors.

The two distance coloring methods calculate the distance between two points. The maximum distance would be the distance between two corners that lie on the same diagonal. The distance from the pixel to the fractal center method will produce concentric coloring of fractals.

Notice that below the dialog box title is the following text: "modifying: default parameters". This informs the user that the global parameters are being modified. If a fractal window's parameters were being altered, the window name would appear after the "modifying:" message (see Figure 3 for an example).

Dragon Fractal Parameters		modifying: default parameters	
Accuracy:	100		
Freedom:	4		
Center Real:	0	<input type="checkbox"/>	Random
Center Imag:	0	<input type="checkbox"/>	Random
Const Real:	1.5	<input type="checkbox"/>	Random
Const Imag:	1	<input type="checkbox"/>	Random
Horiz Scale:	1	<input type="checkbox"/>	Random
Vert Scale:	1	<input type="checkbox"/>	Random

Buttons: OK, Revert, Cancel

Figure

3: General Parameters Dialog Box

The Mandelbrot, Julia, and Dragon Parameters Dialog will be referred to as the General Parameters Dialog. There are two types of data that can be modified in the General Parameters Dialog: the actual variables or a flag indicating random

creation. The variable text boxes will contain the current parameters. Modify these to select an exact location to examine. It is better to leave these to the scaling routines. The only exact parameters not affected by zoom is the constant (Const for Mandelbrot and Dragon, Center for Julia). These values should be modified by the user as no other method will alter their contents.

Setting any of the random check boxes forces the variable to be randomly generated on the next Redraw. Since the method generates a random number within a fractal specific range, there is a good chance that the value may be of little aesthetic interest once the fractal is generated. To help guard against this, select the *Limit Extreme* item from the *Special* menu before redrawing. This forces random variable generation within a more confined range. Note that the random flag is cleared after the fractal is generated to permit zooming. Otherwise, on a zoom the variable would be generated at random again, effectively throwing the user into an unknown and unwanted location.

Notice that below the dialog box title is the following text: "modifying: Dragon 1". This informs the user that a fractal window's parameters are being modified. If global parameters were being altered, the following text would appear: "modifying: default parameters" (see Figure 2 for an example).

Selection

Any portion of the fractal may be selected by clicking the mouse on the desired start location, holding the mouse button down, and dragging to select a rectangular region. A selection may be enlarged by holding down the shift button and clicking the mouse button. The bottom right corner will now be at the location of the mouse. If you hold down the option button, the selected area will be proportional to the image rectangle. Color Fractal Generator only supports single

rectangular selections. The menu command *Select All* will select the entire image. A selection may not be made on a fractal that is being created.

Once an area is selected, several actions may be performed on it. The user may zoom in on the area; invert the color in the region; and cut, copy, paste, or clear the selection. Zooming is covered in the subsequent section. Coverage of the Edit functions (cut, copy, paste, and clear) is found in the *Menus* section under the Edit menu.

Inverting the color of a selection will reverse the colors in the area. The exact inversion method depends on the color environment (see *Applying Color* for information of the color environment). If the color is direct color, the data bits of the color information are flipped. White becomes black, black becomes white, pure red would lose all red information and be a blend of green and blue, etc. This is a true inversion. For indexed color, black and white are flipped. But for other colors, their indexes are swapped. No new colors are created. The existing colors are simply moved around in the image.

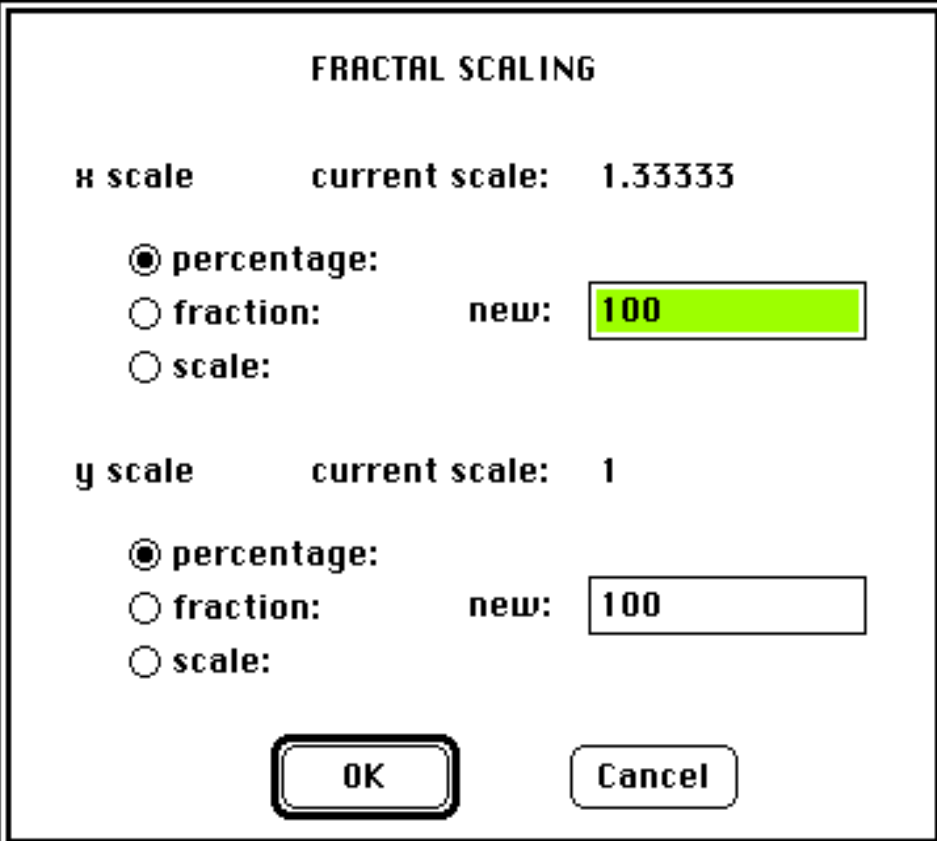
Zoom

There are three zoom commands which result in four zoom actions. None of these commands function on a Random Walk fractal (since there is nothing to zoom in on). Under the *Special* menu are the commands *Zoom In*, *Zoom Out*, and *Zoom*. *Zoom In* retains the current fractal center, but halves the scales. This is a 2X zoom. *Zoom out* is a 0.5X zoom. The scales are doubled. The only limit to the zoom amount is the precision of the machine.

If a rectangle of the fractal is selected, the *Zoom* take the selection and stretches it to fit the image size. The center of the selection becomes the fractal center, while the edges of the selection become the edges of the fractal image. It is possible that the real and imaginary portions of the image will be scaled by different

amounts, since the image aspect ratio is not maintained in the selection. To scale both real and imaginary data the same amount, hold down the option key when making the selection. This forces the selection to maintain the image aspect ratio.

If nothing is selected when Zoom is chosen, a dialog box appears prompting the user for the scaling information (see Figure 4). This dialog box permits precise control of zooming.



The dialog box is titled "FRACTAL SCALING". It contains two sections for x and y scales. The x scale section shows a "current scale" of 1.33333 and three radio buttons: "percentage:" (selected), "fraction:", and "scale:". A "new:" text box next to "fraction:" contains the value "100". The y scale section shows a "current scale" of 1 and the same three radio buttons. A "new:" text box next to "fraction:" contains the value "100". At the bottom are "OK" and "Cancel" buttons.

Figure 4: Fractal Scaling Dialog

The user may modify the x and y scale separately. The current value is displayed in text boxes next to the text: "current scale:". The scaling method for each scale is selected by the two sets of radio controls. Select percentage if you want to enter the scale by percent, fraction to enter a multiplier, or scale to enter the exact scale value.

The percentage is how much you want to zoom in. Entering 200 will zoom in 2X (200%). The fraction is a multiplier to zoom in. Entering 2 with a fraction zooms to 2X. Numbers less than or equal to 0 are invalid.

Applying Color

The main attraction of fractal programs is color. This program tries to permit a wide use of color and application of color to the fractal. Color Fractal Generator can handle anything from 16 to 16.7 million colors. Varying the palette and fractal parameters results in different color application to image. A general description of the way altering parameters affects fractals is discussed in the *Generating Fractals* section. Below is a detailed explanation of the different color depths and use of palettes to alter a fractal's appearance.

The Macintosh determines the colors of each pixels in an image by examining the pixel's value. The two techniques used for converting a pixel value into a color are a color look-up table (CLUT) (indirect color) or the pixel's value as the actual color (direct color). If a monitor is set to 16 or 256 colors (4 or 8 bits of color per pixel), then the Macintosh uses a CLUT. If the monitor is set to more colors (or bits) per pixel, the image is direct color.

Indirect colors require less memory to display an image, but only a limited number of colors can be displayed at once. The value of each pixel in this type of image represents an index into the CLUT. Each index has a corresponding color associated with it. By referencing this table, one converts from the pixel value to a color. Also, changing entries in the CLUT changes the color (since the index will reference a different color). When the user selects or loads a palette, Color Fractal Generator build a CLUT with colors that would be present in such a palette. For example, the majority of entries in a rainbow palette

consist of very bright colors that span the color spectrum (from red to yellow to green to blue), while the entries in a grayscale palette are shades of gray.

The user can specify how many entries in the palette to use, see Figure 5. The minimum amount is four colors, while the maximum is either 10 (for a 16 color monitor) or 250 (for a 256 color monitor). The reason that there are some entries that are not used is to allow for other colors required by the system, such as white, black, and grays. The maximum number of colors to use is set by the user by the *Max Colors* command of the *Special* menu. Note that altering the number of colors will either truncate or expand the current palette. This may have some unwanted side effects in fractal coloring.

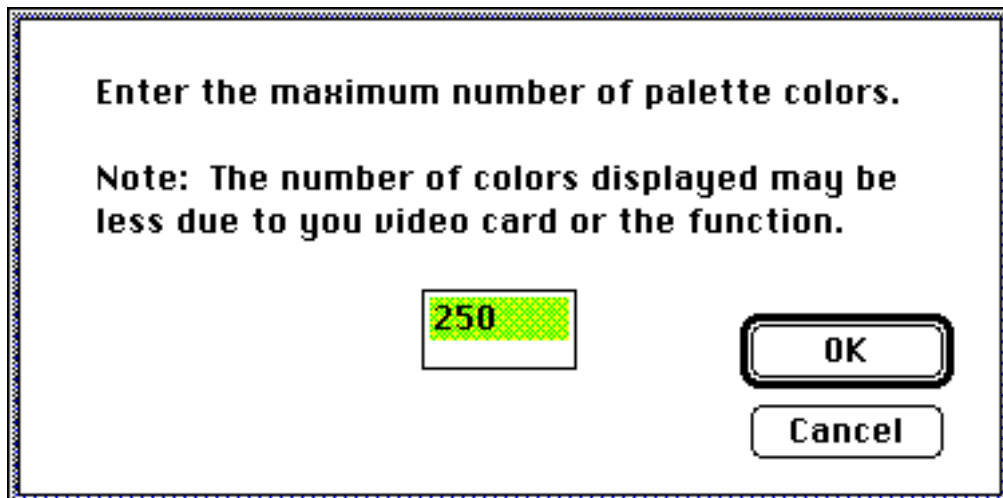


Figure 5: Maximum Colors Dialog

A direct color image is quite different. Instead of using a color look-up table, the pixel values contain color information required by the monitor. Colors are generated by applying different intensities of three primary colors: red, green, and blue. Each pixel contains a certain number of bits for each of these colors to represent the intensity. With more bits per pixel, more colors can be represented. Therefore, 32 bits per pixel (24 of which are color information) can represent millions more colors than 16 bits per pixel (15 bits of which have color data).

Color Fractal Generator uses the advantages of direct color data to greatly increase the number of colors displayed in a fractal. The palette is used as a guideline for selecting image colors. To maintain the highest resolution, the palette in a direct color environment is always set to 250 colors. As a fractal is created, CFG uses the fractal data to determine which two colors in the palette to use as color guides. CFG uses linear interpolation to select the exact color (which lies somewhere between the two reference colors). However, for the rainbow and gray scale palettes, an exact algorithm is used to determine the actual color.

Whether using indirect or direct color, using palettes is necessary. The standard palettes are displayed in a hierarchical menu found at the *Standard Palettes* item of the *Edit* menu. All items above the separator line are default palettes which are always present in the program. One item will be displayed below the line. It is either *No Palette Loaded* or the name of a custom or loaded palette. Initially, this item will read as No Palette Loaded. However, if at any time a palette is edited or loaded, the name of the last custom palette will always appear as the final menu entry.

The custom palette listed for each fractal window could be different. Be aware that the Help window and *New Parameters* window display the global custom palette which is applied to new windows (if this palette is selected). These are important concepts. Editing or loading a palette for one window applies only to that window, not to any other fractal. Thus, you can modify the palette of any window without affecting the colors applied to another window. Also, you can select the palette for fractals before that fractal is opened or created.

A palette is applied to the desired window by bringing the window to the front (clicking on it) and selecting the desired palette from the hierarchical menu (*Standard Palettes* item of the *Edit* menu). If the window is either the *Help* window or *New Parameters* window, CFG applies the palette change to the global data (affecting fractals that are created in the future).

If an indirect color system is used, changing the palette automatically changes the fractal image since the image data only contains references into the palette, not actual color information. Any exception to this rule is for palette of different sizes, see below. For the direct color system, no image change will be evident until the fractal is regenerated as the colors are stored in the image data and the palette only acts as a guideline for selecting colors.

It is possible that none of the palettes are to your liking (only three palettes are built into CFG). To create a new palette or alter an existing one, select the maximum desired colors (by using the *Max Colors* command from the *Special* menu, again this only works for indirect color). Select the palette which you wish to modify. Now select *Edit Palette* from the *Edit* menu. A dialog box with the palette's colors appears (an example is shown in Figure 6; the colors will not appear as good as possible unless the monitor is set to more than 8 bits per pixel).

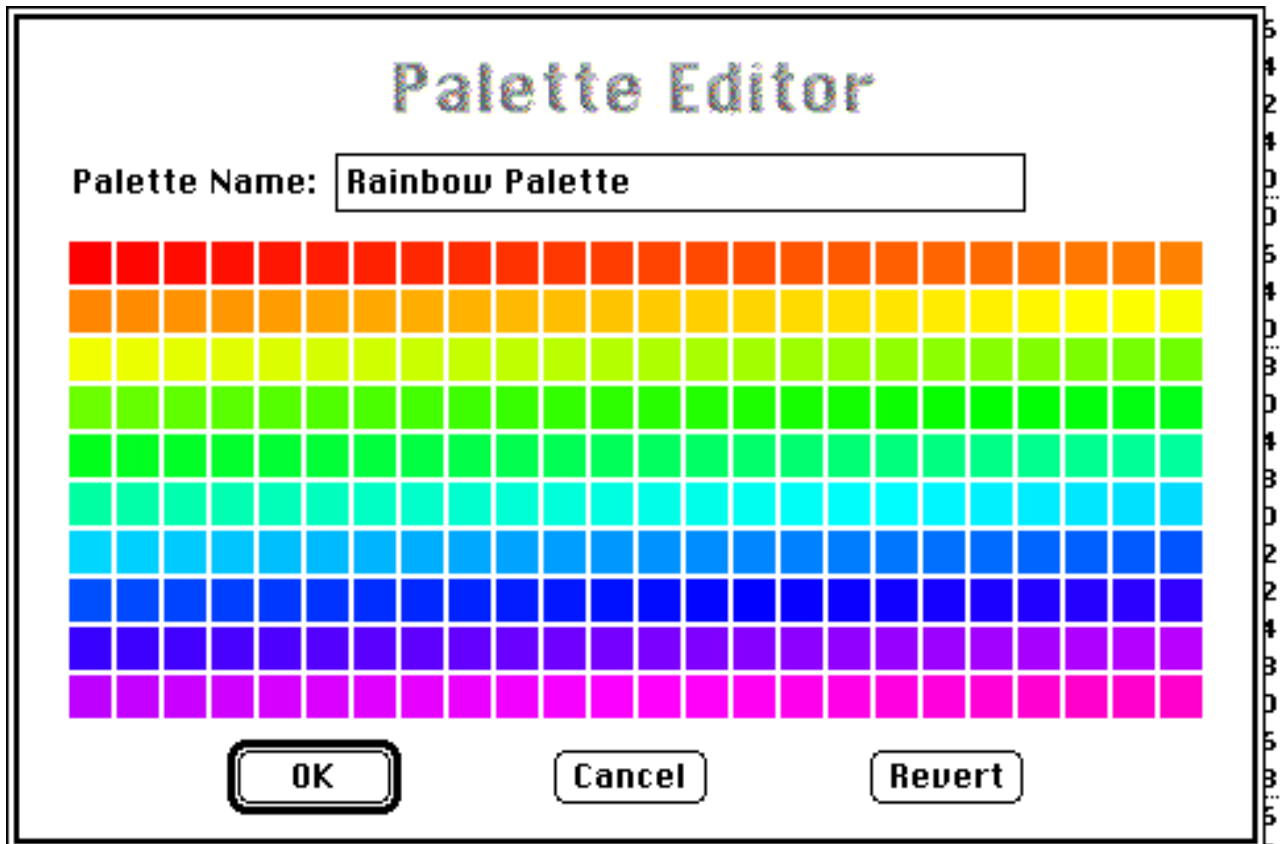


Figure 6: Palette Editor

The user may modify the palette name by using the editable text box. You can select a color by clicking on the color with the mouse or hitting tab to move from the text field to the color field and using arrow keys to maneuver to the desired color. To edit a color, either double click on it, or simultaneously press the Command (Apple) and Return keys. Be careful not to just strike Return since that closes the dialog box. When editing a color, the color picker is displayed which permits the user to select the custom color. After selecting the color, the color will be displayed in the appropriate box. If the colors do not appeal to you, just reset them to the same state as when you entered the Palette Editor by striking the Revert key. Clicking the OK key makes the modified palette a custom palette and applies it to the current window. Striking the Cancel button closes the Palette Editor without changing any colors.

Any palette may be saved by selecting *Save Palette* from the *Edit* menu. The currently active palette of the front-most window will be saved. The user just needs to respond to the standard save dialog to select the palette's file name and location. A palette may also be saved in the parameters file of a fractal. To do so, choose *Preferences* from the *File* menu and check the *Save Palette* box. Next, choose either *Save* or *Save As* from the *File* menu to update the current settings file or create a new one. The palette will be saved with the settings.

To open a saved palette, simply choose the fractal window that you want the palette change to affect (making it the front-most window). Select *Load Palette* from the *Edit* menu and choose the palette from the standard open dialog box (make sure the pop-up menu is set to CFG). The palette will be loaded as the custom palette and this palette will be selected. If the fractal uses indirect colors, the color change will be noted immediately. For direct color fractals, regenerate the image to apply the new colors. If the palette was saved in the settings file, opening this file will automatically apply the correct palette.

The user is no longer limited to only CFG created palettes. Now any palette located in a resource file can be used. Palette resource types include 'pltt' and 'clut'. To load a palette from a resource file, select *Load Palette* from the *Edit* menu. From the pop-up menu, choose either 'pltt' Resource or 'clut' Resource (see Figure 7). The list of files will now show all files. Choose the file with the resource type that you want to load. If the specified resource type is not present in the file, an error message is displayed and no palette is loaded.

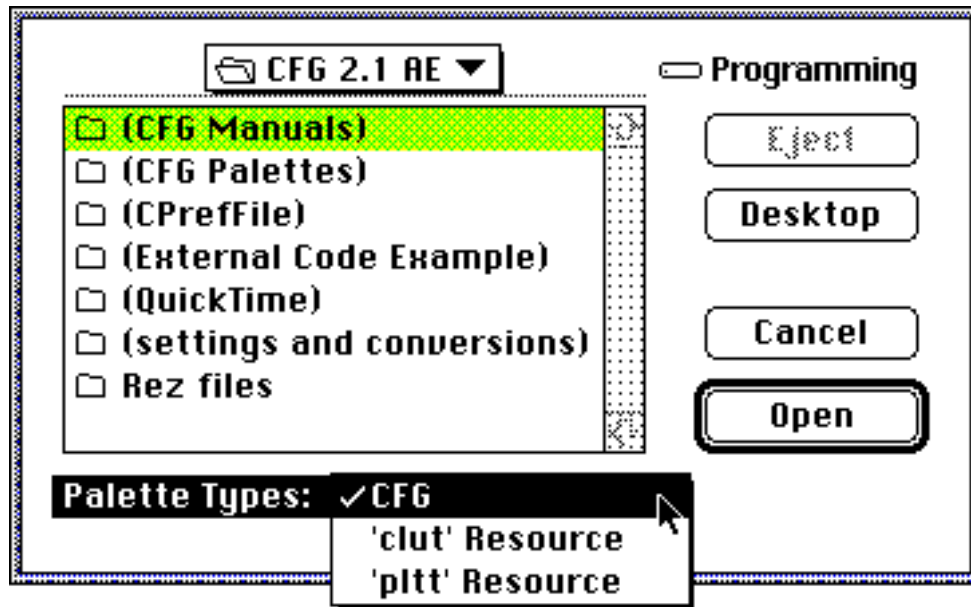


Figure 7: Load Palette Dialog

If only one resource of the specified type is found, it will be loaded as the new palette. If more than one resource of type 'pltt' or 'clut' is found, then a list of the resource IDs and names is shown in a dialog box (see Figure 8). Select a resource to load and strike the OK button, or choose the cancel button to skip the loading.

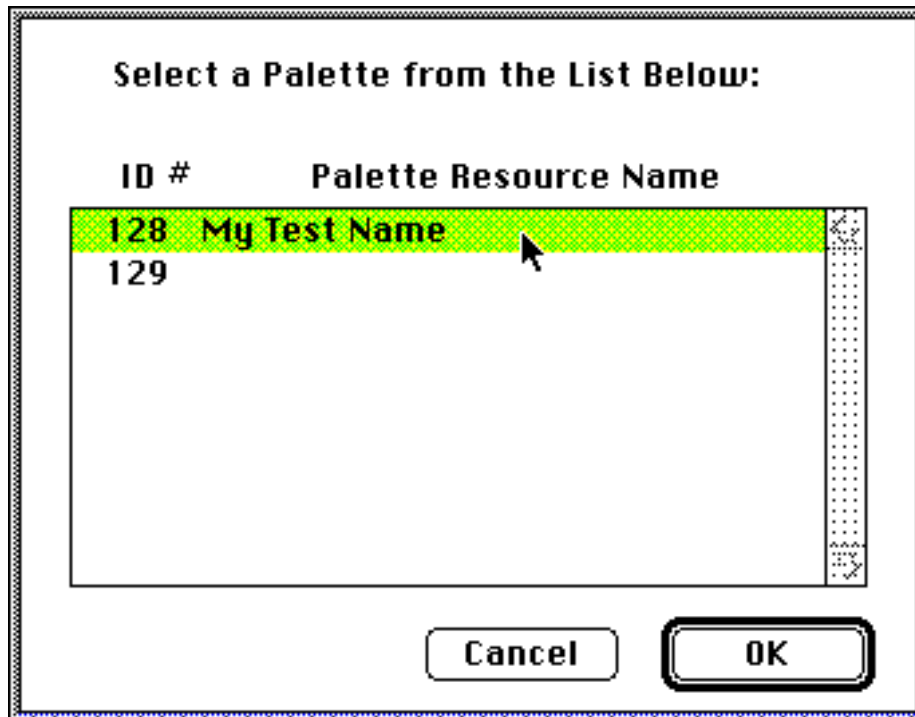


Figure 8: Resource Palette List Dialog

For 'pltt' resources, the first two and final four entries in the palette are ignored since these are reserved by CFG. For 'clut' resources, the first entry and the final five are ignored. The reserved entries are used by CFG for white, black, and a few other colors.

When loading a palette, the maximum number of colors is automatically adjusted for according to the number of entries in a palette. If only full palettes are used (all 256 colors defined - or 16 for 4 bit systems), then no problems should arise. However, loading a palette with a different number of colors on indirect systems may require a redraw before one can take advantage of the full palette. For example, if a fractal currently has a palette with 200 colors defined and a new palette is loaded with 250 colors, then one would need to redraw the image to view the newly defined 50 colors (the image only has data for the original 200 colors).

NOTE about changing screen depths: Try not change the screen depth while this program is running. Although not as hazardous as it would have been with previous

versions of CFG, it still may pose a danger. The safest method of changing the screen depth is to quit CFG, change the depth, and re-launch the program.

Saving Data

There are four types of data that can be saved: data from the help window, palettes, parameters for fractal creation, and the fractal's graphic image. For information regarding saving the help information, see the section on the *Help System*. Saving palette information is described in the *Applying Color* section.

Data directly related to generating fractals can be saved and reloaded for future use. This enables you to continue exploration of a fractal where you left off. To save the fractal's settings, select either *Save* or *Save As* from the *File* menu. The difference between these menu items is that *Save As* will always prompt the user for a file name and location, while *Save* only presents this dialog once and continually saves the data to the same file. Saved data can be reopened with the *Open* command from the *File* menu.

The parameters file can contain additional information, such as the palette and fractal image (only for registered copies of Color Fractal Generator). Two preferences enable these options: *Save Generated Fractal* and *Save Palette*. *Save Generated Fractal* permits the user to save either a complete or partial fractal image inside the file. Thus, if generation could not be completed for some reason, the partial fractal image could be saved and one could start regenerating from where the creation process left off. Saving the palette inside a file prevents the user from needing to save the palette as a separate file and load the palette after loading the fractal.

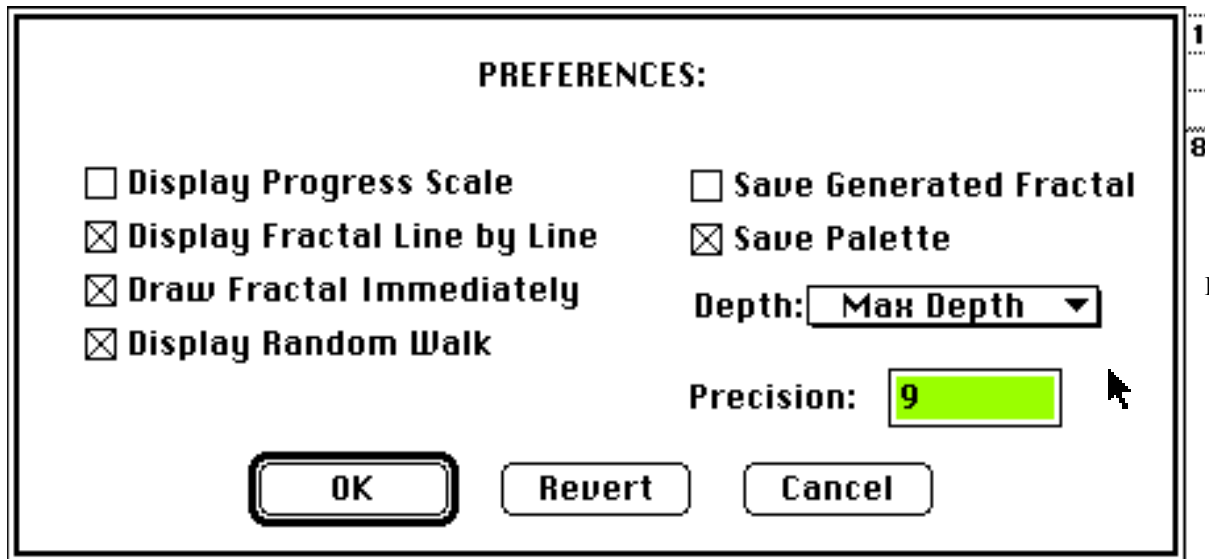
To save the image as a PICT file, you need a registered copy of the program. Selecting *Save PICT* from the *File* menu will save either the complete or partial fractal image as a PICT file for opening in another application. Only the actual picture is saved to this file, so one cannot continue exploration of the fractal world by only saving the image.

The *Save PICT* creates a color PICT file that many graphic applications can open. The user can modify the default program that opens the file. To do so, the user needs some knowledge of ResEdit and file types. NOTE: please work only on copies of the actual application since an inappropriately modified file may not function properly.

Currently, the default creator is Adobe Photoshop (creator type (signature): '8BIM'). If you know the application signature to use as the default PICT creator, open the Color Fractal Generator application with ResEdit (or another resource editor) and edit the resource of type 'Data' and ID 128 (name is "default PICT creator"). Replace the signature '8BIM' (signature is the 4 characters between the single quotes) with the desired signature and save the file. If everything went correctly, CFG will now save a PICT file as an image created by the desired application.

Preferences

Preferences permit the user to customize certain features in the program. Figure 9 shows the dialog box to expect after selecting the *Preferences* command from the *File* menu. The user may enable the various options by placing a check in the box next to the item. The option is de-selected (and disabled) by removing the check from the box. Each window has a different set of preferences associated with them. These were derived from the global preferences when that window was created. The global preferences are those displayed when selecting Preferences with either the *New Parameters* window or *Help* window as the front-most window. There is no way to apply a preference to all windows (short of adding this capability through scripting). Only the active window is affected.



Figure

Figure 9: Preferences Dialog

Color Fractal Generator preferences give the user these options: display progress scale, display fractal creation one line at a time, draw the fractal immediately, save generated fractal images in the settings file, save the palette in the settings file, generation color depth, and floating point precision. Descriptions of each of these options follow.

Display Progress Scale

When checked, this option displays a progress scale while the fractal is being generated. As the fractal approaches completion, the scale is updated. An example of such a scale is shown in Figure 10. If the box is not checked, no scale is displayed.

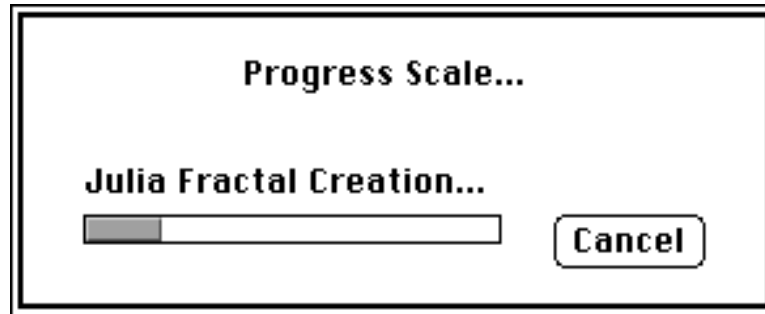


Figure 10: Progress Scale

This scale is only displayed while generating a fractal in the foreground. If a fractal is being created in the background, the scale will not be displayed, no matter how the preferences item is set.

Display Fractal Line by Line

Selecting this item will permit the application to update a fractal image as each line is completed, instead of presenting the entire fractal at once. This method is more lengthy, but it permits the user to see that the fractal is being created. If one desired to zoom in on a certain region, the user may stop the fractal creation once that region has been completed, long before the complete image would be created.

If this item is not checked, the image will only be displayed when the creation process is completed or has been canceled. Please note that this preference item does not apply to Random Walks, as these fractals are not created one line at a time.

Draw Fractal Immediately

Draw Fractal Immediately is an option which will start the image generation process as soon as a file is opened or a fractal is created (with the *New* command). The user does not have a chance to change any parameters associated with the window before fractal creation begins. If this option is not selected, no fractal

creation will happen when *Open* or *New* is selected. Instead, an empty window will be displayed and it is up to the user to initiate fractal creation (with *Redraw*, *Continue*, *Zoom*, etc.).

Display Random Walk

This option applies only to Random Walk fractals and only when Foreground generation mode is active. If this option is selected, the actual movement of the particles is displayed as they create the Random Walk fractal. This method of fractal creation requires a great deal more time than without displaying the moving particles as the screen must be updated for each move. If the option is not selected or the fractal generation is in background mode, then no moving particles are shown.

Save Generated Fractal

This item is only available to registered users. Checking this box will cause the complete or partial fractal image to be saved along with its settings. When the fractal is reopened, the image generation can pick up where it had left off. This option can create vary large files as it stores the actual fractal image in the file. If this option is not selected (as is the case for unregistered copies of this program), the fractal image will not be saved with the parameters.

Save Palette

Setting this option saves the current palette (whether it is a standard palette or custom palette) in the settings file. This permits a custom palette to be applied to the fractal the next time it is opened without having to load the palette separately. Simply checking this box will not save the palette in the parameter file, however.

The user must still select either *Save* or *Save As* from the *File* menu to update the file.

If this option is left unselected, the palette will not be saved to the parameter file. In this case, if the fractal had a custom palette associated with it, that palette will be lost when the file is opened from disk (unless it was saved with the Save Palette command). A default palette will be assigned to the fractal.

Depth

The image's depth can be selected by the depth pop-up menu. The user may choose to create a fractal with as many colors as the most colorful monitor connected to the system or he may choose a specific color depth. A list of the menu choices and explanations is located in the *Pop-Up Menus* section under *Depth*.

One may choose to modify the depth of a currently open fractal. This can be dangerous since memory must be re-allocated. Make sure that the fractal is saved before altering its depth.

Precision

This is the number of significant digits that are used to display fractal data. The value can be from 3 to 18 digits. The default is 9 digits.

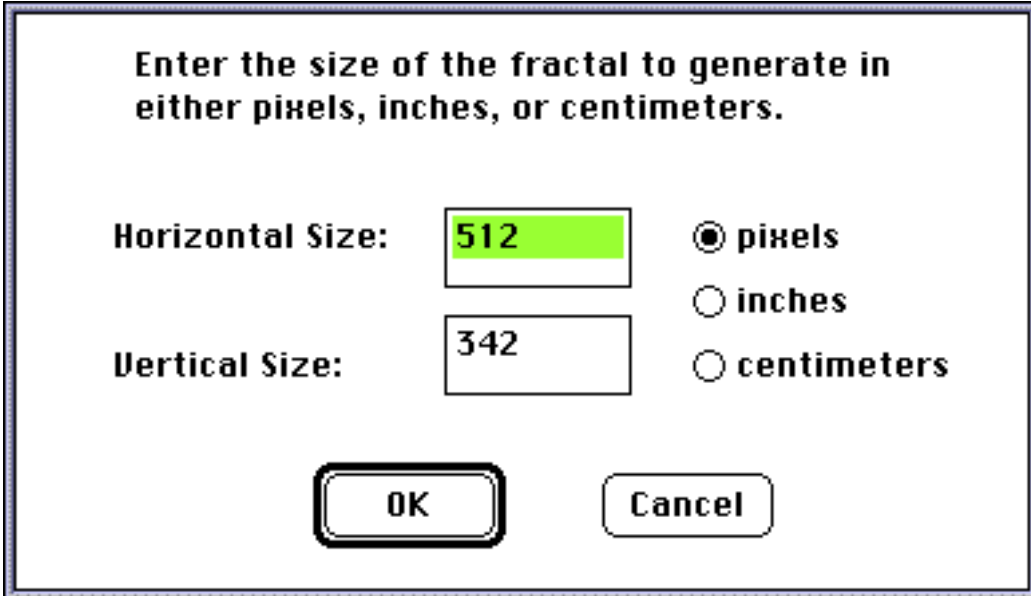
Fractal Size and Memory

CFG can create fractals of different sizes. This not only permits custom use of the fractal, from using it for a background on a 19" monitor to creating an interesting mask for a QuickTime transition, but it permits the user to maximize speed and memory usage. Initially, the fractal generation size may be small so that the general fractal area can be

found quickly (as generating a small image requires much less time than a large image). Once the desired fractal location has been found, the size can be increased for very detailed fractal image generation. Smaller fractal sizes also use less memory.

Size selection occurs through use of the Size menu. The basic selection include Screen Size, Mac 9" Screen, Mac 12" Screen, Mac 13" Screen, Mac 19" screen, and three QuickTime screen sizes. Screen Size sets the image size to the total amount of real estate used by all monitors connected to the system. Mac 9", 12", 13", and 19" Screen sizes set the image to the pixel size of those standard monitors. QuickTime sizes set the screen sizes to 160x120, 320x240, and 640x480.

The final menu item permits custom fractal size selection. Figure 11 displays the Custom Fractal Size dialog box. The user selects whether to specify the fractal size using either pixels, inches, or centimeters by toggling the appropriate radio buttons. The horizontal size and vertical size can be set by typing the sizes into the text boxes. There are minimum and maximum sizes for a window. The minimum size is 120 pixels horizontal and 100 vertical. The maximum window size is 32000 x 32000 pixels (hope you have LOTS of RAM for this size).



The dialog box is titled "Enter the size of the fractal to generate in either pixels, inches, or centimeters." It contains two text input fields: "Horizontal Size:" with the value "512" and "Vertical Size:" with the value "342". To the right of these fields are three radio buttons labeled "pixels", "inches", and "centimeters", with "pixels" being selected. At the bottom are "OK" and "Cancel" buttons.

Figure 11: Custom Fractal Size Dialog Box

This program requires a large amount of memory, especially as the number of colors and image size increase. The settings of 1024K is fine for a monitor of size 640 x 480 pixels and an 8 bit video card. If you use a larger monitor or one with a video card with more depth (bits per pixel), the size of the memory allocated to the Color Fractal Generator should be increased. The base amount of memory to allocate to the program is 512K. For each desired fractal, add at least: bitmap size $[(x \text{ pixels} * y \text{ pixels}) * \text{screen depth (bits/pixel)} / 8 / 1024]$ K. This is only a guideline. With some experimenting, the user will get a feel for the amount of memory needed for a desired image.

Help System

Two help systems are provided in this program. The CFG Help Manager is accessed by using the *Help* command from the *Apple* menu. The other system is Balloon Help, which is only available to users with Balloon Help in their System (System 7.x and possibly late versions of System 6.0x). The CFG Help Manager is a subset of this manual. Portions of the sections describing the operation of this program are included on-line. Balloon Help contains portions of this manual with additional information to provide help for systems not described in the CFG Help Manager (such as individual menu items and dialog components). The CFG Help Manager is described below. For information on operating Balloon Help, please consult the documentation which came with the System software.

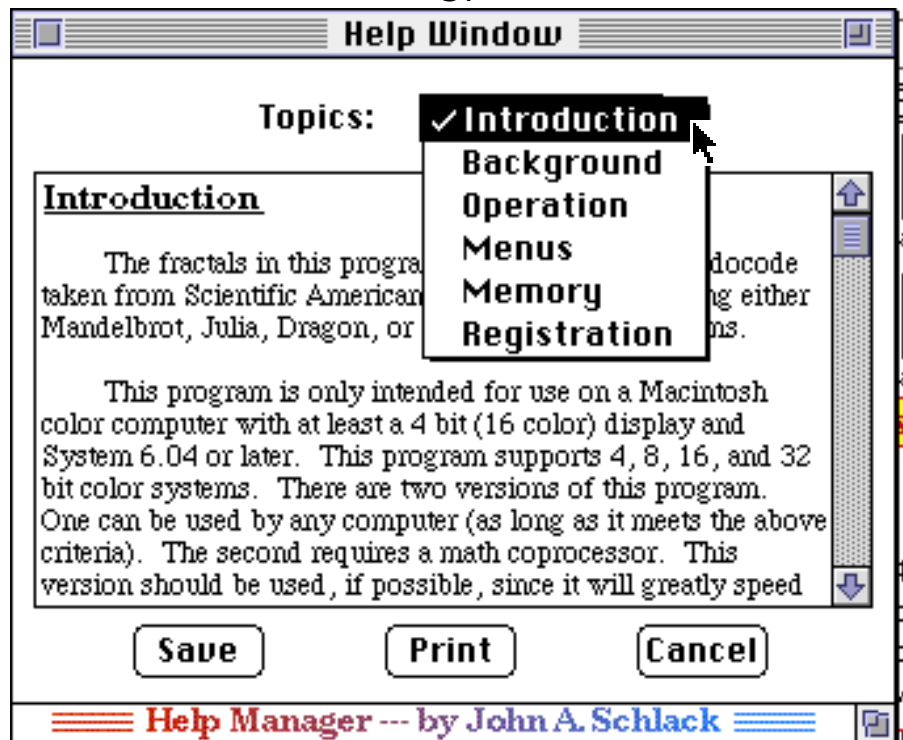


Figure 12: CFG Help Manager Window

A window showing an example of the CFG Help Manager is displayed in Figure 12. There are three basic sections of the window: the topics pop-up menu, the text region, and the buttons.

Information on various topics is displayed by choosing the topic from a pop-up menu at the top of the help window. Selecting a new topic displays its information in the text pane of the *Help* window.

The text pane is the region of the window with the topic information. It can be identified by the scroll bar to its right. Text in this region can be selected and copied, but it cannot be deleted or modified. To print or save the text, use the appropriate button.

The save button will only save the ASCII data (formatting is lost). If a selection is made, only the selection will be saved. If there is no selection, the entire contents of the pane are saved. After pressing the Save button, the standard save dialog box is displayed permitting the user to select the location and name of the data file.

Many applications can open ASCII files. The user can modify the default program that opens the file. To do so, the user needs some knowledge of ResEdit and file types. NOTE: please work only on copies of the actual application since an inappropriately modified file may not function properly.

Currently, the default creator of text files is Microsoft Word (creator type [signature]: 'MSWD'). If you know the application signature to use as the default TEXT creator, open the Color Fractal Generator application with ResEdit (or another resource editor) and edit the resource of type 'Data' and ID 129 (name is "default TEXT creator"). Replace the signature 'MSWD' (signature is the 4 characters between the single quotes) with the desired signature and save the file. If everything went correctly, CFG will now save an ASCII file which has the desired default creator.

To print the information in the text pane, press the Print button. The help text will be printed with formatting and highlighting intact. Two dialog boxes will be displayed after pressing the Print button. The first is the Page Setup dialog box which permits the user to modify paper parameters. Pressing OK saves the parameters while Cancel will force the program to use default printing options. The second dialog is the print dialog which allows the user to select a page range, number of copies, etc. Selecting the OK button will print the document, while Cancel will abort the printing process. After printing is initiated, it can be stopped by pressing the Cancel button in the progress dialog box (similar to the one displayed in Figure 10). NOTE that the print button always prints the complete information, a selection will have no effect on printing.

One may remove the Help display from the screen by choosing the Cancel button. The help display may also be removed by using the small close box at the left of the window title.

Note that the CFG Help Manager is not a dialog box. Its window may be left up while attending to other activities. If you move the help window behind some other windows, a quick way to move it to the front is to either select the *Help Window* item from

the *Windows* menu or select the *Help* command from the *Apple* menu. The second method will not create a new *Help* window, but simply moves the open *Help* window to the front.

Main Menus

Apple



About CFG

The *About* menu item will display a dialog box with information about this application and its creator.

Help

The *Help* menu item will display a window with an interactive help system to provide details about the operation of this program. For a detailed description of the CFG Help Manager, see the Help System section of this document.

File

File	
New	⌘N
Open...	⌘O
Revert	⌘R
Close	⌘W
.....	
Save	⌘S
Save As...	
Save PICT...	
.....	
Preferences...	
Quit	⌘Q

This menu provides general controls for creating windows, saving data, changing preferences, and quitting the program.

New

This menu item creates a new fractal with the characteristics described by the *New Parameters* window.

Open

Open permits the user to retrieve saved fractal files.

Revert

Choosing *Revert* restores the current fractal to its last saved state. Possible reasons for disabling this item are: the front window is not a fractal, the current fractal has not ever been saved, or the fractal is being generated.

Close

This option closes the front window. If this window is a fractal window, and the data has not been saved, a dialog box will appear asking whether to save the data. Close will be disabled when the front window is the *New Parameters* window.

Save

Save puts the data for generating the fractal into a file. It may also store the palette and fractal graphic if these options are set. The program will not save the graphic if it is not a registered version. *Save* is also disabled if the front window is not a fractal window.

Save As

This menu item functions just as *Save* does, except it always prompts the user for a file name.

Save PICT

Save PICT writes the graphic data to a file using the PICT format. Any application that can open color PICT files should open the fractal image. The program will not save the fractal image if it is not a registered version. Possible reasons for being disabled are either the front window is not a fractal window or this program has not been registered.

Preferences

This item permits the user to modify execution parameters of this program.

Quit

Quits this program. If any fractal open has not been saved, the user will be prompted to save the data.

Edit

By using this menu, the user undo a change in the fractal's parameters, transfer data between applications, and modify the palette.

Undo

Choose this method to undo the last fractal parameter change made to the front window. If the front most window is not a fractal, the change is made to the global parameters. This menu item will be disabled if no change has ever been made to the fractal parameters. If a change is undone, the Undo command transforms into a Redo command to undo the undo. Subsequent undoes will toggle the menu item between Undo and Redo until another parameter is changed.

Cut

This function deletes the selected area from the fractal image and stores it in the Clipboard. Cut will be disabled if no area is selected, the front window is not a fractal, or this program has not been registered.

Copy

This function copies the selected area and stores it in the Clipboard. Copy will be disabled if no area is selected, the front window is not a fractal, or this program has not been registered.

Paste

This item copies any PICT contents on the clipboard into the selected window region, scaling the image if necessary in order to occupy the entire selected region. Paste will be disabled if no area is selected or the front window is not a fractal. Note that this is not the standard method that paste should function (being disabled if no selection is made and scaling the PICT to the size of the selection).

Clear

This routine deletes the selected area from the fractal image. Clear will be disabled if no area is selected or the front window is not a fractal.

Select All

This function selects the entire fractal, even if it extends beyond the current window size. This is disabled if the front window is not a fractal window.

Load Palette

This function reads in a palette file and applies it to the front window if it is a fractal. If the front window is not a fractal, the palette will become the default palette, being applied to new fractals.

Edit Palette

Selecting this item displays a dialog box which permits the user to edit the current palette.

Save Palette

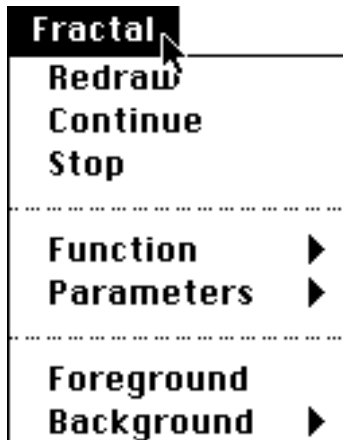
Save Palette saves the currently active palette to a file for later use. It can be retrieved by using the Load Palette command.

Standard Palettes

This is a hierarchical menu for selecting the palette of colors to apply to a fractal.

To view the palette, select it and choose the Edit Palette command.

Fractal



This menu permits the user to choose the fractals to create, edit fractal parameters, and select the fractal generation speeds.

Redraw

Redraw will start the image creation process from the very beginning. This item may be disabled since the front window is not a fractal or the fractal is being generated.

Continue

This menu item is similar to Redraw, except that it starts drawing the fractal image from where it left off (if the image generation process had been previously terminated). This item may be disabled since the front window is not a fractal, the previous fractal generation was not canceled, or the fractal is being generated.

Stop

This menu item halts the creation of a fractal in the front-most window. It is disabled either because the front window is not a fractal or the fractal is not being generated.

Function

This hierarchical menu selects the type of fractal to create.

Parameters

This hierarchical menu permits the user to modify the current fractal's parameters or those of new fractals.

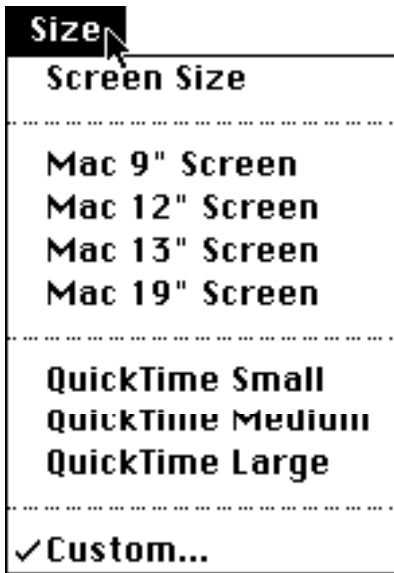
Foreground

Selecting this item forces fractal creation in the foreground (the user may not perform any other tasks during image creation). This method of fractal creation is the fastest.

Background

This hierarchical menu puts the fractal in background generation mode and permits the user to select the speed at which the fractal will be generated.

Size



This menu selects the size of the fractal to generate. As the image size increases, so do the memory and time requirements for image generation.

Screen Size

This sets the fractal size to the total space used across all monitors.

Window Size

The fractal image will always fill its window bounds. Be careful, if memory becomes fragmented and the fractal size is increased, the program may run out of memory.

Mac 9" Screen

The image will fill a Mac Classic sized screen (512 x 342 pixels).

Mac 13" Screen

This image fills the standard 13" screen (640 x 480 pixels).

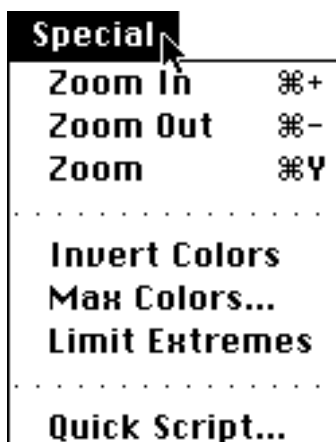
Mac 19" Screen

This image fills the standard 19" screen (1024 x 768 pixels).

Custom Size

This user selects the image size in either pixels, centimeters, or inches.

Special



This menu permits zooming fractals, inverting color, setting the maximum number of colors, and confining the size of random parameters to a smaller area.

Zoom In

This fractal zooms in on the fractal (halving the scale parameters). Image creation is started immediately. Possible reasons for being disabled are either the front window is not a fractal, the fractal is being created, or it cannot be zoomed.

Zoom Out

This fractal zooms out of the fractal (doubling the scale parameters). Image creation is started immediately. Possible reasons for being disabled are either the front window is not a fractal, the fractal is being created, or it cannot be zoomed.

Zoom

Zoom changes the view of the fractal. If a region is selected, the selection becomes the new image bounds. Otherwise, a dialog box is displayed with fractal zooming parameters. Possible reasons for being disabled are either the front window is not a fractal, the fractal is being created, or it cannot be zoomed.

Invert Colors

The colors in the selected region are inverted. The palette will not be affected. Possible reasons for being disabled are either the front window is not a fractal, the fractal is being created, or there is no selected area.

Max Colors

The user may select a maximum number of colors to display. The palettes will be recalculated with this number in mind. Max Colors will be disabled

if the front window is not a fractal or the program is using true color (32768 or more colors).

Limit Extremes

This function confines the size of random parameters to a smaller area. It is only used if any of the parameters selected are random. Limit Extreme will be disabled if the front window is not a fractal.

Quick Script

This function permits the user to execute a script in a fashion similar to the UserLand Frontier "Quick Script" window. The menu item is only active when Frontier is running. Note that since the script is executing from a modal dialog box, one will not be able to execute commands targeted for Color Fractal Generator as it is currently busy (running the Quick Script window).

Standard Palettes



Selects the palette of colors to apply to a fractal. To view the palette, select it and choose the Edit Palette command.

Grayscale Palette

This palette is a set of colors consisting only of grays.

Rainbow Palette

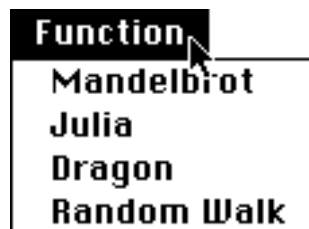
This palette has a rainbow of colors.

System Palette

The standard Mac colors.

No Palette Loaded / Custom Palette

No Palette Loaded means that there is no loaded custom palette. Otherwise, the name of the custom palette for the active window will be displayed here.

Function

This menu selects the type of fractal to create.

Mandelbrot

New fractals will be based on the Mandelbrot algorithm. This item will be inactive if a fractal window is the front-most window.

Julia

New fractals will be based on the Julia algorithm. This item will be inactive if a fractal window is the front-most window.

Dragon

New fractals will be based on the Dragon algorithm. This item will be inactive if a fractal window is the front-most window.

Random Walk

New fractals will be based on the Random Walk algorithm. This item will be inactive if a fractal window is the front-most window.

Parameters

Permits the user to modify the current fractal's parameters or those of new fractals.

Mandelbrot

Modifies the Mandelbrot fractal parameters. This menu item will be disabled the front window is not a Mandelbrot fractal.

Julia

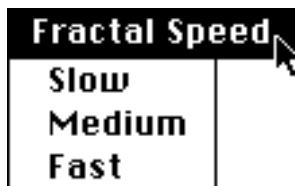
Modifies the Julia fractal parameters. This menu item will be disabled the front window is not a Julia fractal.

Dragon

Modifies the Dragon fractal parameters. This menu item will be disabled the front window is not a Dragon fractal.

Random Walk

Modifies the Random Walk fractal parameters. This menu item will be disabled the front window is not a Random Walk fractal.

Background Speed

This menu puts the fractal in background generation mode and permits the user to select the speed at which the fractal will be generated.

Slow

The program will generate the fractal in the background slowly. The user will have the most processing power available for other tasks.

Medium

This speed is a compromise between slow and fast. The fractal is generated faster than Slow, but less processing power is used than in Fast mode.

Fast

The fractal will be generated as fast as possible, but still permitting the user to engage in other activities. It uses much more processing power than Slow.

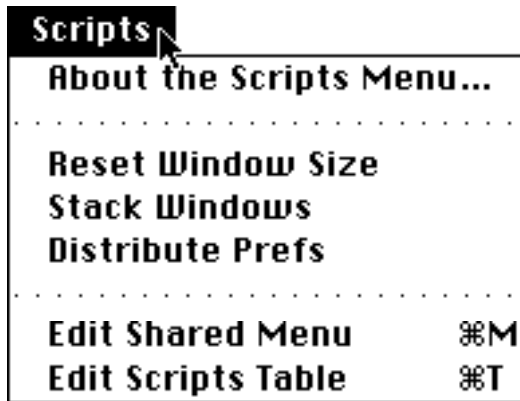
Windows

This menu permits the user to select a specific window without maneuvering through other windows to find it.

Cycle Windows

This item moves the current window to the back of all windows and makes the next window the current window.

Scripts



This menu is only displayed if UserLand Frontier is running. It enables the user to execute Shared Menu Scripts and edit the Scripts Menu. Three sample scripts are included to demonstrate the power of scripting and how the feature set of CFG may be easily extended. Detailed information about the sample scripts is located in the scripts themselves (source code is included - located in the Frontier database) and in the document *CFG Scripting Guide*.

About the Scripts Menu...

This function displays a short message about the Scripts menu. In essence, it says, "This menu contains scripts written with UserLand Frontier."

Reset Window Size

This menu item activates a sample script that resets the size of the top window to the size that it had when the window was first displayed. If the image is smaller than the screen size, the window will enclose the entire fractal. For larger images, the window size will be slightly smaller than the screen size.

Stack Windows

The sample script activated by this menu item stacks the windows such that the bottom window is in the top left corner and each window above it is offset both horizontally and vertically. The *New Parameters* window is

made the front-most window. Stacking permits easy access to all open windows.

Distribute Prefs

This sample script copies the preferences data from the *New Parameters* window (actually that global preferences that will be applied to all subsequent fractals) to all other fractal windows. Preferences are not copied to fractals that are currently generating.

Edit Shared Menu

This function makes UserLand Frontier the front-most application and displays CFG's shared menu for editing. One may examine the sample scripts, add new menu options, or delete old ones.

Edit Scripts Table

This menu item makes UserLand Frontier the front-most application and displays CFG's database table for editing. One may examine (or modify) the low level workings of the glue scripts that transmit the Apple Events.

Pop-Up Menus

Open Palette



This pop-up menu is available in the Get File dialog box that is displayed when *Load Palettes* is selected from the *Edit* menu. This menu permits the user to choose which type of palette to load.

CFG

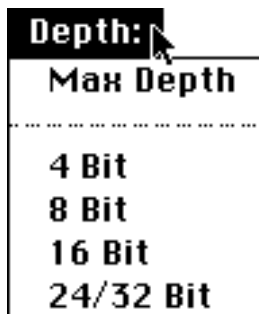
Selecting this menu item will display only CFG created palettes in the Get File dialog box.

'clut' Resource

This item displays all files. It is used to permit the user to load palettes that were stored as 'clut' resources.

'pltt' Resource

This menu item displays all files. It is used to permit the user to load palettes that were stored as pltt resources.

Depth

This pop-up menu is displayed in the Preferences dialog box. It permits the user to select the color depth of fractals. One may choose a particular depth or generate fractals at the depth of the most colorful screen.

Max Depth

Selecting this option will create fractals that can have as many colors as the most brilliant screen currently attached to the system.

4 Bit

This depth can create fractals with up to 10 colors (4 bit has 16 colors, but 6 colors are defined for other purposes in CFG).

8 Bit

Eight bit depth can create fractals with up to 250 colors (8 bit has 256 colors, but 6 colors are defined for other purposes in CFG).

16 Bit

This depth, usually used with QuickTime, can create fractals with thousands of colors.

24/32 Bit

This is the most demanding depth, requiring 4 bytes to represent for every pixel. It can potentially display millions of colors. Note that although it requires the most memory, generating fractals at this depth is not much slower than 8 bit depth. Also, you probably will not notice any difference in image quality if 16 bits is used instead of 24/32 bit depth.

Scripting

One of the most useful and powerful features in CFG, and something that sets it apart from other fractal programs, is its scriptability. Extensive support has been added to CFG to support UserLand Frontier and AppleScript. CFG also supports shared menus with Frontier.

Scripting is accomplished through the use of Apple Events. A script is written and executed from a client application (such as Frontier or Script Editor). The client application executes the commands in the script, converting any CFG specific commands into Apple Events which are sent to CFG for processing. One may execute scripts from the client application's environment, shared menus (see the *Shared Menus* section below) or the Quick Script dialog box in CFG (*Quick Script* command from the *Special* menu). These last two methods are available only from Frontier.

The Quick Script dialog box (see Figure 13) is similar to the one that exists in Frontier. The user may enter a script of up to 255 characters in this dialog and have Frontier execute the commands by striking the *Run* button. The result of script execution is shown below the words "Response:". The *Done* button discards the dialog.

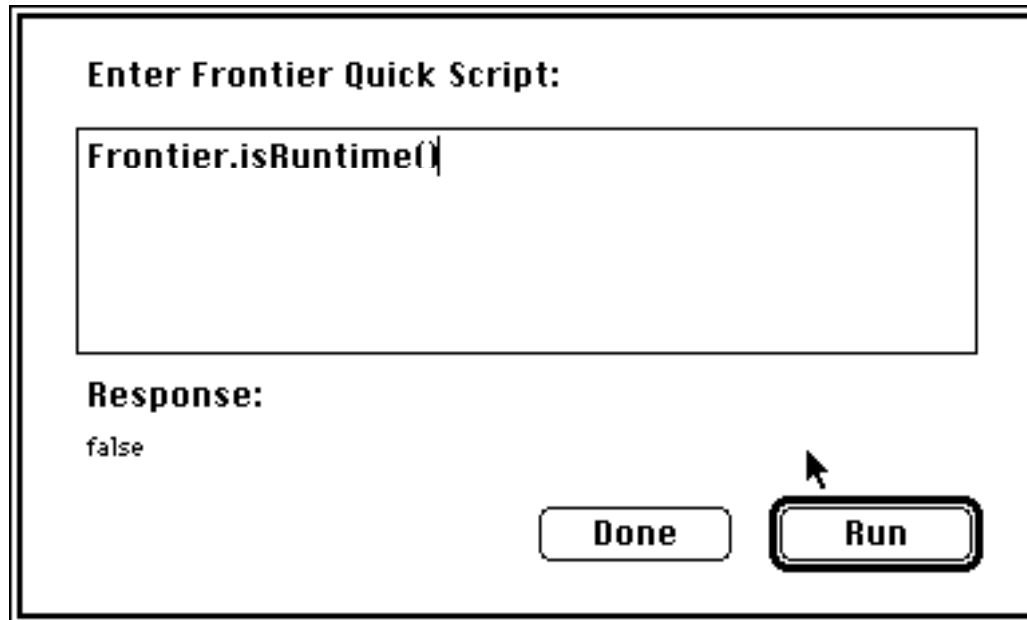


Figure 13: Quick Script Dialog

NOTE that commands targeted for CFG cannot be executed from this dialog box. When the Quick Script dialog box is visible, all Apple Event processing is put on hold (except the events that CFG sends to Frontier to execute the script). Therefore, unpredictable results will occur when trying to execute CFG commands from this dialog box. (Executing CFG commands from the shared menus is perfectly safe).

The data that Frontier needs to support CFG is located in the *CFG & Frontier* folder. All command documentation will be installed in the DocServer database and additional information is located in the *CFG Scripting Guide*.

Shared Menus

A shared menu is a menu that is appended to the end of the menu bar by another application. CFG supports shared menus from UserLand Frontier. A sample shared menu is already provided - named the *Scripts* menu. The *Main Menus* section above contains a detailed explanation of the initial menu commands. This menu only appears when Frontier is executing.

The main purpose of a shared menu is to extend the power of CFG. A Frontier script can be attached to the shared menu, permitting the user to execute his favorite scripts without needing to switch to the UserLand Frontier application. Consult the Frontier documentation for information on creating and modifying shared menus. Note that the *Quick Script* command from the *Special* menu also permits one to execute Frontier scripts from within CFG (see the *Scripting* section above).

Speed Comparisons

Below are two tables designed to provide the user with some idea of the differences in speeds between various program settings. Note that these tests were conducted with CFG 2.0.

Table 1 shows a comparison of the color depth and whether a math coprocessor was used. These tests were executed under the following conditions: Mac IIfx with 2 MB allocated to CFG, Mandelbrot fractal using default settings, foreground fractal generation, and an image size of the Mac 9" screen. The no math coprocessor tests were conducted using SANE calls instead of math coprocessor calls. As can be seen from the table, running with a math greatly enhances the speed of fractal computation. Employing 32 bit color instead of 8 bit incurs a speed penalty, but it is not dependent on the math coprocessor.

	math coprocessor	no math coprocessor
8-bit color	176	1471
24-bit color	277	1574

Table 1: FPU/Color Depth Speed Comparison (time in seconds)

Table 2 compares the different modes of generation: foreground vs. the three background speeds. These tests were executed under the following conditions: Mac IIfx with 2 MB allocated to CFG, Mandelbrot fractal using default settings, 32-bit color depth, using the math coprocessor, and an image size of the Mac 9" screen. Note that the background times are with the host computer engaged in no other activities. Speeds will slow even more as processor time must be allocated to foreground tasks.

foreground	277
slow background	417
medium background	327
fast background	290

Table 2: Generation Speed Comparison (time in seconds)

Machines Tested and Bugs

Version 2.1x has been developed and tested on a Mac IIfx with 20 MB of RAM running System 7.1 Pro. The machine was using 32-bit addressing and virtual memory was off. Color depths tested include 4, 8, and 32 bit. I have tested printing only on a laser printer. Script testing was performed using UserLand Frontier 3.01. I cannot guarantee compatibility with earlier versions of Frontier.

If you experience any compatibility problems, please let me know. Include as much system and hardware information as possible, along with a complete description of

the bug and when it appears. I'll see what I can do to fix it. I cannot guarantee compatibility for all system configurations (there are just too many, and I have access to very few).

One issue that may arise is if CFG attempts to use a math coprocessor if one is not present. This will lead to a serious and horrendous crash. The only reason for such a case happening is the operating system is informing CFG that a FPU (floating point unit) is present or there is a bug in my code (hey, no software developer is perfect). This crash would most likely occur on startup. You can force CFG to ignore the FPU if you are not afraid of a little ResEdit.

Open a backup copy of CFG in ResEdit. Open the 'Data' resource with an ID of 130 using *Open Using Hex Editor* from the *Resource* menu. Delete any data in this resource. Type the following hexadecimal sequence: "3638 3030 3000". In the ASCII section to the right of the hex string you should see "680001". Save your changes, quit ResEdit, and launch the modified version of CFG. If all goes well, you'll be greeted by the *New Parameters* window.

PowerMacs

Color Fractal Generator is currently only available in the 680x0 form, not native PowerPC format. This means that a PowerMac will need to execute the program in emulation mode. I cannot even guarantee that the PowerMacs will be able to do this since CFG makes heavy use of the math coprocessor, if one is available. If the program does not seem to be able to run (or run reliably), try the floating point fix described in the *Machines Tested and Bugs* section above. If it still cannot run, then you will need to wait for a PowerMac version.

A PowerPC native version of CFG should appear by summer time if I find the PowerPCs worth purchasing (I know that they are fast, but how inexpensive will it be for a

system that has the proper memory and drive capacity for serious software development?) and I can get development tools for such a machine cheaply.

Note that if enough people register (or inform me that they will register if a PowerPC version were available), the likelihood of such a version will increase dramatically (and so will the speed at which it is produced - money does talk).

Registration

Please don't skip this section. Even if you don't plan on registering initially, some of what I have to say might entice you to register, especially if you are interested in obtaining the source code to this program.

This program is Shareware. I am asking for a registration fee of \$15 for the Standard Version of CFG. If you pay this fee, you will receive the registered version of the program which enables you to save the fractals in PICT format and copy the fractals for pasting into other applications. You will also receive a free upgrade when the next version becomes available. You will also receive the skeleton **code for creating your own CFG palettes**. All you need to do is put in the code to create the desired colors. The source is in THINK C 6.0 format.

Ok, now, here's the real value. If you send \$40 for registration, I will send you the Master Version of CFG. This includes the **FULL SOURCE CODE** in THINK C 6.0 format (includes portions of Frontier SDK 3.0 which are used to build CFG; I highly suggest that you obtain the entire SDK as it will prove to be a valuable addition to your development library). This will allow you to modify the procedures for your own program (however, you are not permitted to release or sell modified versions of this program or release or sell code which is based entirely or in part on this program's source code). You also will receive all the benefits of the Standard Version described above. Note that the source code for the two free updates will not be included.

I will provide a hard copy of the documentation for \$25 (laser printer supplies are expensive). The printed documentation includes the CFG User's Manual and CFG Scripting Guide.

Please, when you register, try to send either a check or money order. I will accept cash, but it could become a real hassle, especially if it gets lost in the mail. Mention that you are registering for Color Fractal Generator 2.1 (I have a couple other Shareware products). Finally, if you have an E-mail address, provide that as well.

Send your Shareware fees to:

John Schlack
824 Rhoads Avenue
Jenkintown, PA 19046

Feedback

Register and give me feedback. I want to know what you think. What do you like? What do you want improved? Added? Deleted? Overhauled? Registration is \$15, and you will get a future update sent to you free. For \$40, you get all the above, two future updates free, plus the THINK C 6.0 source code (for the first version only). A great value considering the time that I put into this program. Send your comments and registration fees to:

John Schlack
824 Rhoads Avenue
Jenkintown, PA 19046

You can also reach me through E-mail:

America Online:	John40
Internet:	John40@aol.com
CompuServe:	70252,143